

# Winton Outlook

August 2023

[www.winton.co.nz](http://www.winton.co.nz)

## Māori New Year - Matariki celebrations a hit with Winton locals

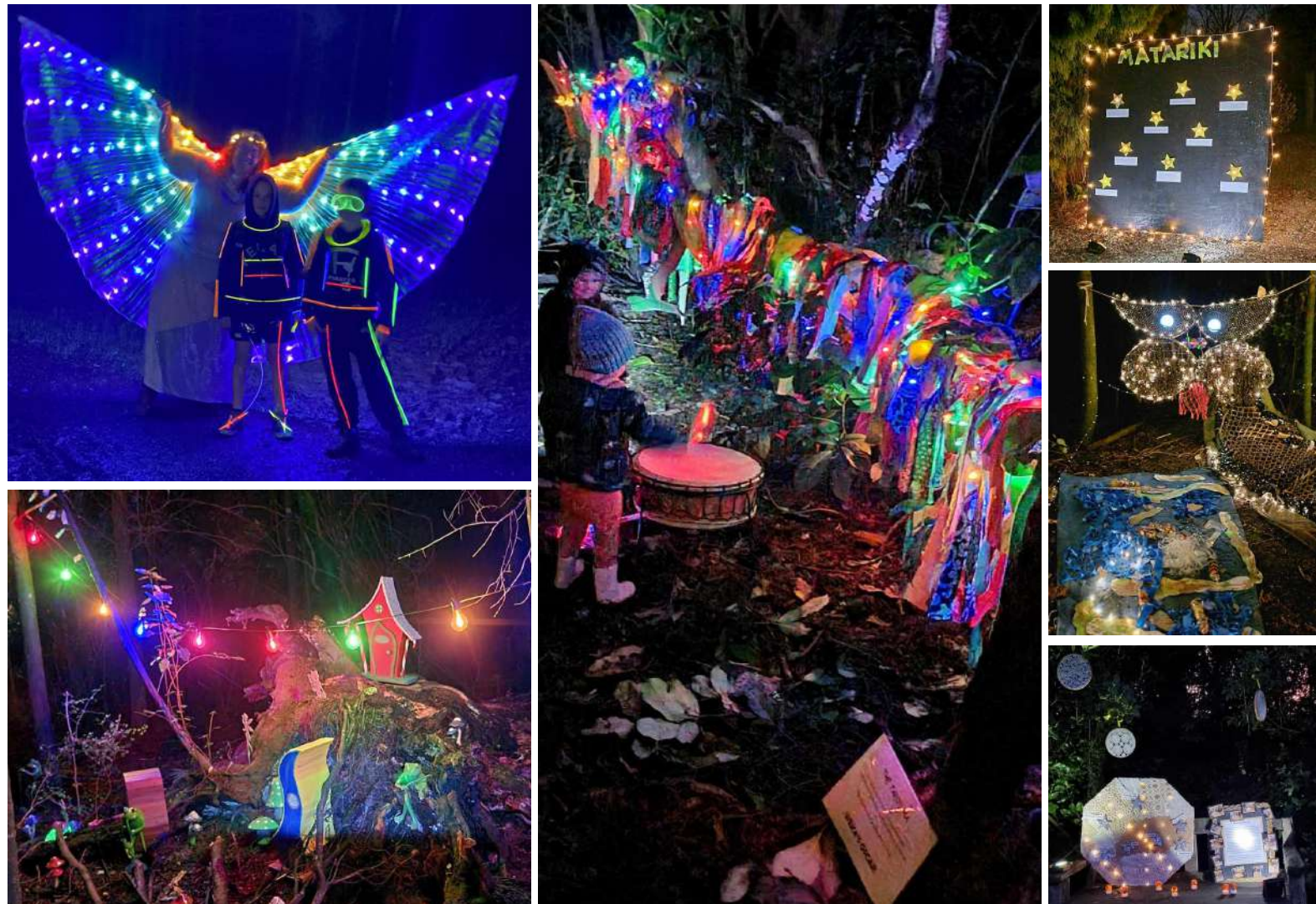
Magnificent Matariki was the perfect evening to showcase the work of many Winton tamariki (children) and the educational services that support us throughout the Central Southland region.

The feedback from the evening has been mind-blowing, with everyone saying it is the best one yet and by far the most outstanding display in Southland. This is so rewarding, as the effort put into bringing the whole Ivy Russell Reserve alive for one night is a huge undertaking.

Weka Preschool brought so much of the reserve alive, along with the other educational services having a specified area to display their celebration and recognition of Matariki. They all take pride in bringing te ao Māori alive through entertainment, performance, food and art.

We welcomed Richie from Numnuts Audio to add to the atmosphere with heart-warming sounds. Volunteer Mark Owen shared his time, resources and love of fairy lights, which was a welcomed contribution this year. The community support around Matariki is growing as the festivity, understanding and value in welcoming the Māori New Year in grows.

Next year, Rochelle Robins from Weka Preschool will be pulling together a new approach with a committee of volunteers to assess costs, setup, clean-up and delivery options. Rochelle has always driven the event with support from many of her Weka staff and the other services contributing with food, time, equipment and effort. If you are interested in supporting this annual event please contact Rochelle via email: [rochelle@wekapreschool.com](mailto:rochelle@wekapreschool.com)



Article & pictures supplied by Rochelle - Weka Preschool



## Winton Community Support Update

This is a good opportunity to share a few things that have been happening recently both with my role and the role of Let's Link in our Central Southland community.

### Dementia Information Session:

Last week I was finally able to get the Dementia information session off the ground. This has been a work in progress since 2020 when the first lock down forced me to cancel. Unfortunately, another two cancellations followed so I was pleased to finally be able to present this information to the community.

Unfortunately, the turnout was great which in turn means that a large number of people in our community are affected by this disease.

As a follow on from this session I am hoping to get a support group up and running here in Winton and I will also endeavour to find out more about the Cognitive Stimulation Therapy that was mentioned on the day. Thank you to those of you that attended.

### Shingles Vaccine Financial Help:

If you are requiring the Shingles Vaccine and the cost of it is preventing you from getting it, ask your GP or at reception at your local medical centre as there is help available.

### Making that Food Dollar Stretch Further:

The Salvation Army and I are currently in the middle of a short set of cooking classes aimed at providing ways to make that food dollar go a little bit further in our current climate. Our numbers are small but the banter and the take home food is good and I believe we are all learning something along the way. If you would like to put your name down for future classes get in touch with either Anna at the Salvation Army or myself. We would love to hear from you.

### Farmers Meals:

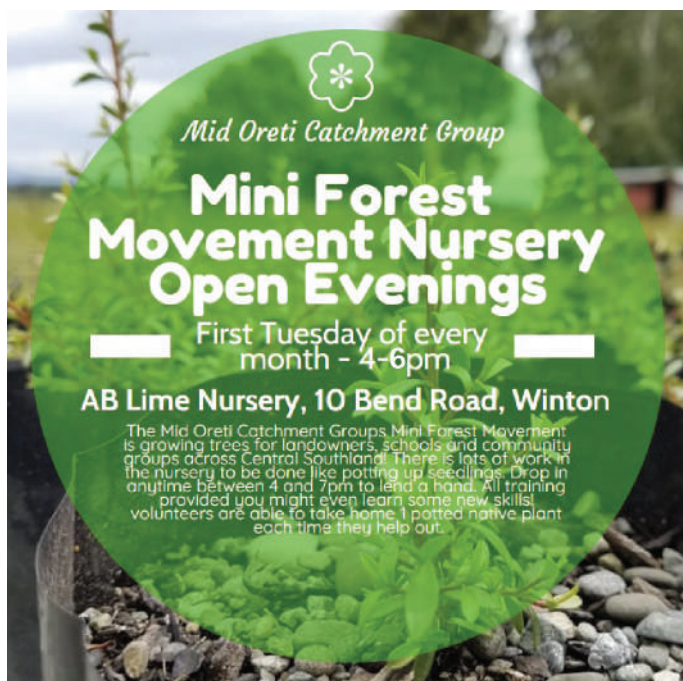
Farmers Meals are about to start again for the busy calving and lambing season. Many groups in our community take a turn at prepping and cooking an evening meal once a week for our farming community. Attendees are encouraged to come along straight off the farm and enjoy a free hearty home cooked meal and dessert before heading home for the evening. Held in the Presbyterian Church Hall on Wednesday evenings from 6.30pm - 8pm from August 2nd through till 20th September. All farming families and workers welcome.

### Winton Food Bank:

The Let's Link Winton Food Bank is always super appreciative of the way this community generously gives when food collections are done. Due to the current economy the food bank is catering to double the amount of usual food parcel requests which in turn has seen our meat freezer completely depleted.

If anyone is planning to refill their freezer in the near future, please keep us in mind if you are wanting to clear out your meat surplus. Many thanks on behalf of the Let's Link group.

**Louise Faithful - Winton Community Support, Gow Street, Winton. Phone 03 236 9934 or email: [wcs@xtra.co.nz](mailto:wcs@xtra.co.nz) or find us on Facebook - Winton NZ Community Support.**



**Cut Above**  
**HANDYMAN**

**Ross Clark 027 211 3442**

- Gardens
- Fencing
- Hedges
- Farm Minding
- Spraying
- Stock Work
- Waterblasting
- Shelter Belts
- Lawns - Ride on + Rotary

## Midlands Rugby 2023 Season Update

The 2023 Rugby season has now finished for Midlands. They entered a Premier, Premier Development and Women's Team.

The Premier team had several injuries, causing some weeks to be a tough fought battle, although they came away with a win this year. The team continued to put in a strong performance and improve each week which was great to watch.

The Premier Development team who followed the Premiers around this season won several games, even with lending players to the Premier team. They keep progressing each week and have been building a great segway for those starting in Senior Rugby.

Midlands Junior Rugby is still underway and continues into August. This year the club has 8 Junior teams (1 in 'A' Grade, 3 in 'B' Grade, 2 in 'C' Grade & 2 in 'D' Grade/Rippa). Thank you to all the volunteer coaches that have put their hand up so far, we look forward to the rest of their season.

The Women's team keep going from strength to strength. This year they made the final again, however went down to a strong Marist side. We continue to be very proud of our women, with a mixed team of experienced and rookie players they keep developing and are quickly becoming a force to be reckoned with.

Article & pictures supplied by Midlands Committee Member - Sam McDowell.



Midlands Women's Team



Midlands Premier Men's Team



Put **Saturday 18 NOVEMBER** in your calendars.

What would you like to see at the Winton Open Day this year? Do you have an event, stall, display, show, entertainment, fundraiser etc that you would like to do at the Open Day?

Please email [winton.nz@outlook.com](mailto:winton.nz@outlook.com) with your ideas, suggestions and if you would like to be part of the day with your club or business. We would like to continue to offer our Central Southland community a fantastic family fun day out.



# Winton Outlook

August 2023

[www.winton.co.nz](http://www.winton.co.nz)

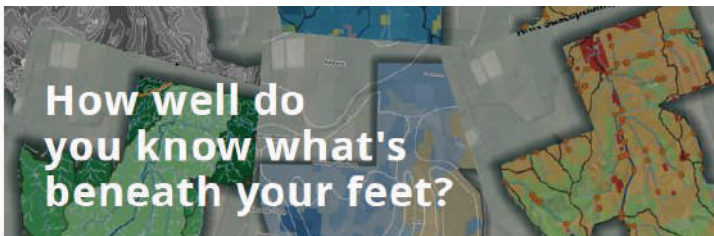
## 2023 / 2024 Rotary Phone Book Update your details & information

The Winton Rotary Club are producing the 2023/2024 local phone book.

If you wish to update or add information (for example any new addresses, cell phone numbers and emails etc) please fill in a listing form at one of the following businesses:

**Winton Hospice Shop, Winton Library, Winton Medical Centre, Mitre 10, Winton New World, Paper Plus, The Bakery, The Big White Shop and Vet South Winton.**

We are encouraging cell phone numbers to be added as many people no longer have landlines. You may prefer to contact **Diane Macdonald 022 197 0733** and she can help.



The Hedgehope Makarewa Catchment Group presents two

## Maps into Action Landowners Sessions

Building on the successful Understanding our Landscape fieldday, held at the Miller's property in March, these sessions will show you how to access and utilise state of the art landscape susceptibility maps for YOUR PROPERTY.

NEW map available - a SLOPE MAP has recently been added to the website. This high-resolution map shows paddocks, or parts of paddocks, that are over 10degrees.

Working alongside scientist Clint Rissmann from Land & Water Science, you will be shown how to access the maps and interpret what they tell us about your property. These sessions will provide valuable information for your Farm Environment Plan and help to answer your questions:

- What effect does my landscape have on water quality?
- What mitigations would reduce nutrient, sediment and E. coli losses from my property?
- Are there any areas of my property that are over 10degrees in slope? (important for determining whether a farm requires a winter grazing consent)

10.30am to 1.00pm  
Salvation Army Hall, Dejour road, Winton  
Thursday, 3rd August  
Tuesday, 10th October

Please bring along a laptop so that you can access the landscape maps for your property



LIMITED SPACES.  
TO BOOK YOUR SPOT,  
PLEASE RSVP TO

**Mo Topham**  
027 279 7449

Winton Lion Club  
WE SERVE



Matariki  
Good to give back to community

- **BBQ truck** is out for the Matariki Celebration @ Ivy Russell Reserve. Winton Lions Club serve and support the Winton community
- **VEGIE- PROJECT**, Winton Lions Club have fresh produce. (By the end of Aug. - starting Sep, date will be confirmed) Please contact your community support person; Louise Faithfull from Winton phone 03 236 9934 Cara from Lumsden phone 027 810 8880 and or Kerri from Tautapere phone 027 757 5983 Anne from Otatau phone 027 737 3670 where there is a need, there is a LION.
- **FUNDRAISER - PALLET DRIVE**, the Winton club would like to ask farmers, to donate wooden pallets from AB Lime, Clarkes Seed & Feed and Winton stockfeed. We like to fundraise for "Local community projects" and for "the Lions Cancer Bus", for melanoma detection screening -free for all public. Will start collecting by the end of September.

We meet every 4th Wednesday of the month

6.30pm @ Central Southland Lodge

Winton Central Southland Lions Club

## Winton Lions Club

Meet our new young Winton Lions in-coming President **Katt Henderson** for the Lions year 23-24 and our out-going President Allan Forde



WE SERVE

Thank you, **Kathleen Cocker** for your 33 years of Lions Service to the Winton Lions Club and the Winton Community.



Winton Lions Club is happy to support the Winton District & Community.



# Winton Outlook

August 2023

[www.winton.co.nz](http://www.winton.co.nz)

\$20 for 20 Daffodils | [daffodilday.org.nz](http://daffodilday.org.nz)



## Preorder fresh flowers for your workplace

Order online by **Fri 4 August** at [daffodilday.org.nz](http://daffodilday.org.nz)

Pay online by card now or by invoice (bank transfer) later

Fresh daffodils delivered to your door starting **Mon 21 August\***  
\*Delivery to urban workplaces & schools

Display your fresh flowers for Daffodil Day, Fri 25 August

### Collect Donations

In addition to fresh flowers, you can host a donation counter box or QR code sign throughout August - just add to your online order.



Funds raised will stay in your region

Scan to preorder online now



## OFFICE SPACE AVAILABLE FOR SUBLET

This is a prime location on the main street of Winton.

- Ample street parking
- Shared waiting area
- Common area as a staff room
- Staff parking
- Friendly and professional atmosphere
- Duration of the lease is flexible

Please contact **Jenna** on **021 206 8128** or email [message@dynamichealth.nz](mailto:message@dynamichealth.nz) if you are interested or would like to know further information.

—||NRG||—  
HEALTH & FITNESS

## FIT4 FUNCTION

LOW IMPACT GYM CLASS FOR 60+



MONDAY & WEDNESDAY

10:30AM - 11:00AM

\$60 FOR 10 CLASSES

**FUN**  
**MOBILITY**  
**STRENGTH**  
**BALANCE**



03 208 6165

153 PARK STREET, WINTON 9720

## MEETINGS

### Walking Group

If you are interested in joining us for a walk each fortnight, the Winton Walking Group are meeting on the 3rd, 17th & 31st August, phone Helen on 022 156 8404.

### Winton Garden Club

AGM Meeting  
Tuesday 8 August,  
7.30pm Anglican Church Hall, Meldrum St Winton. Visitors welcome. Contact Janice 021 0533 588 or Colleen 027 632 8217

### Winton Business Association

Monthly Meeting at the Top Pub Dining Room (behind the main bar). Tuesday 29 August 5.30pm. Speakers will be some representatives from the SDC and Oreti Community Board. All welcome.

### Otautau Patchwork Group

meet every Tuesday, 9.30am at the Otautau Bowling Club, Rye St. Anyone interested in patchwork/quilting will be made very welcome. Bring your own lunch and spend the day with like-minded women. Enquiries: Joyce 021 0225-1623.

### Takitimu Patchwork and Embroidery Group

meet 1st & 3rd Thursday of the month, 9.30am-4pm, Winton Presbyterian Church Hall, 11 Meldrum St, Winton. Anyone interested in Patchwork/Quilting/Embroidery is welcome. Sharon 027 223-3435. [takitimupatchwork@gmail.com](mailto:takitimupatchwork@gmail.com)

## WORKPLACE FIRST AID - REFRESHER

### 01 WINTON - ST JOHN REFRESHER COURSE

This First Aid class is a revalidation for holders of any Level One First Aid certificate (less than two years old).

Refresh your first aid skills, knowledge and confidence with the latest information and techniques through practical scenarios and workstations.

You must have a current Level One First Aid certificate (from any provider) that is less than two years old to attend this refresher course.

- **Thursday 10 AUGUST**
- 9.30am - 4pm
- \$100 per person
- Salvation - Army 7 De Joux Road, Winton



Contact Southern REAP (Rural Education) to register on [info@reap.co.nz](mailto:info@reap.co.nz) or call 0800 111 117

## 6 WEEK COURSE TE REO MAORI FOR BEGINNERS



- Learn the pronunciation of words, sounds, vowels, time, days of the week, months & seasons
- Learn to understand and use numbers
- Introduce yourself in a formal and informal setting
- Learn objects, people, body parts and locations
- Learn simple sentence structure
- Whakapapa - learn about your family history

Come along to these fun and relaxed sessions to learn the basics of Te Reo Maori. No prior knowledge needed.

Dates: **TUESDAYS - 15 AUG - 9 SEP** at 6pm - 8pm at Southern REAP. \$40 per person.

Contact Southern REAP (Rural Education) to register on [info@reap.co.nz](mailto:info@reap.co.nz) or call 0800 111 117





# Winton Outlook

July 2023

[www.winton.co.nz](http://www.winton.co.nz)

## Essential Contact Numbers

### WINTON COMMUNITY SUPPORT WORKER

Louise 236-9934 or [wcsww@xtra.co.nz](mailto:wcsww@xtra.co.nz)

### HEALTH SHUTTLE

for MEDICAL appointments in Winton and Invercargill  
Phone 0800 103-046.  
(Operates by donation). A shuttle to Dunedin is also available leaving & returning daily from Invercargill.

### LET'S LINK TRANSPORT SERVICE

Ken Galt 027 454-9119  
or Louise 236-9934

### LET'S LINK ODD JOB SERVICE

Phone Louise 236-9934.

### FREE SMOKE ALARM CHECKS

Checks/updates/batteries changed by a Volunteer Fireman.  
Phone Louise to book 236-9934

### HELPING HANDS

Lawn, garden and pet care for those suffering short term medical issues.  
Phone Robyn Bye 0274 182-053.

### WINTON LIBRARY

0800 732-542

### WINTON MEDICAL CENTRE

236-7444 or Urgent Doctor Service  
Invercargill 03 218-8821

### WINTON PHARMACY

236-7729

### WINTON TRANSFER STATION

Florence Road  
Mondays & Wednesdays 2pm-5.30pm  
Fridays 12-5.30pm  
Saturdays 1-5pm  
Sundays 2-5pm

### LET'S LINK FOOD BANK

Ken Galt 027 454-9119  
Louise 236-9934  
Anna Ellis 021 238-8526  
Salvation Army 03 236-0928

### LOSS & GRIEF SERVICE

Appointments available on request.  
Southern REAP, 224 Great North Rd.  
Phone 027 443 8788 to book.

## Church Services

### Winton Christian Centre

Weekly 10am Sundays  
RSA Hall, 186 Great North Road

### Catholic Church

Mass Sundays 10.30am  
Priest Rev Hamesh Wyatt  
84 Great North Road, Winton  
Contact 236 8084

### Salvation Army

Sundays 11am  
Friday night youth group  
7 Dejoux Road, Winton

### Presbyterian Church Winton

**Sunday Services**  
Winton 10am  
Dipton 6pm every 2nd and 4th Sunday

### Live Alone Lunch

2nd Thurs of each month. Fellowship and food for those living alone.  
RSVP to Kathleen on 236 0250.

### Shared Lunch

Every Wed at 12.30pm. All welcome

Choirs, Prayer and Bible Study Groups  
**Queries please phone office 236 9792**  
Mon to Fri 9am to Noon

**Winton Church** 11 Meldrum Street  
**Dipton Church** 60 James St, Dipton  
**Postal Address P.O Box 5, Winton**  
Baby change facilities available.

### Anglican Church Services

Weekly 10am Sundays. All welcome  
Cnr Meldrum St & Great North Road



**Winton Monthly Market**  
10.00am - 2.00pm  
**SATURDAY 19 AUGUST**  
**PRESBYTERIAN CHURCH COMPLEX**  
Meldrum Street, Winton  
**Over 40 stalls in hall, foyer, lounge & outside. Now running until 2pm.**  
Enquiries to Mary: 236 8821

## Funding options available now

Funding options available for community projects:

Southland District Council has a variety of funding options available to assist community projects and initiatives.

More information can be found in the Council or the Community & facilities section on our website  
[www.southlanddc.govt.nz](http://www.southlanddc.govt.nz)

The Community Partnership Fund is administered by our nine community boards. Applications closing on 31 August are for the Northern, Oraka Aparima, Tuatapere Te Waewae and Wallace Takitimu community board areas. Applications closing on 30 September 2023 are for the Oreti, Ardlussa and Fiordland community board areas. Applications for the Waihopai Toetoe community board close 15 September with Stewart Island/Rakiura community board applications closing on 31 October.

Applications for the following funding options all close on 30 September,

- » For projects of a larger scale which benefit for the whole region, or at least two community board areas, the District Initiatives Fund supports the development and implementation of initiatives.
- » Local arts initiatives can benefit from Creative Communities funding, while the Ohai Railway Fund provides grants and loans for the benefit of the residents of the former board area.
- » Junior school and club sports teams (children age 5-18) could be eligible for the Sport NZ Rural Travel Fund to help subsidise transport costs to games when competing regularly in a local competition.

Application forms and criteria are available at [www.southlanddc.govt.nz/cfp](http://www.southlanddc.govt.nz/cfp)

## Nominations now open!

Nominations are now open for the annual Southland District Council community service awards.

Designed to recognise outstanding contributions, it's a fantastic opportunity to honour and celebrate those people in our communities who truly go the extra mile to make a difference.

Community members may nominate an individual or group who have provided a significant contribution to their community board area through leadership, volunteering, or community service.

Nominees contributions could be in the education, youth, health, sport, heritage, art, culture, environment.

Nominations close on 30 September 2023. Southland's nine community boards will then consider any nominations received and allocate up to two community service awards from their respective areas.

Nomination forms are available from SDC offices or online at:  
[www.southlanddc.govt.nz/community-and-facilities/community-service-awards/](http://www.southlanddc.govt.nz/community-and-facilities/community-service-awards/)



## GORE FOOT CLINIC

**PODIATRIST**  
**CLAIRE KEMP**

**MONDAYS**

AT  
**CENTRAL PHYSIO**  
**PH: 03 236 0100**

**FOR ALL YOUR**  
**FOOT PROBLEMS**

The material contained within the Winton Business Association newsletter is published in good faith and for general information purposes only. The Winton Business Association has full and final discretion to not accept or publish any submissions that contain political, religious, or personal views and opinions.

Next edition of the Winton Newsletter will be 1st September 2023.

Closing deadline for advertising  
**10am, Thursday 20 August 2023.**

Business advertising available with very limited spaces: 45x90mm \$35 or 90x90mm \$50

Closing deadline for articles  
**10am, Thursday 20 August 2023.**



Receive your newsletter  
faster via email. Register at  
[www.winton.co.nz/subscribe](http://www.winton.co.nz/subscribe)

Supported by the Winton Business Assoc

Information can be emailed to: [winton.nz@outlook.com](mailto:winton.nz@outlook.com)